

# EXTERNAL HEAVY-DUTY HINGE 180°

Heavy-duty rolled hinge for mounting with screws or rivets that is ideal for vehicles. The hinge-leaves are folded, designed for a flat surface mounting, and the four holes have a hole diameter of Ø 6,5 mm. Opening angle 180°. The hinge pin is fixed.



## MATERIAL

**Hinge:** Steel, zinc plated

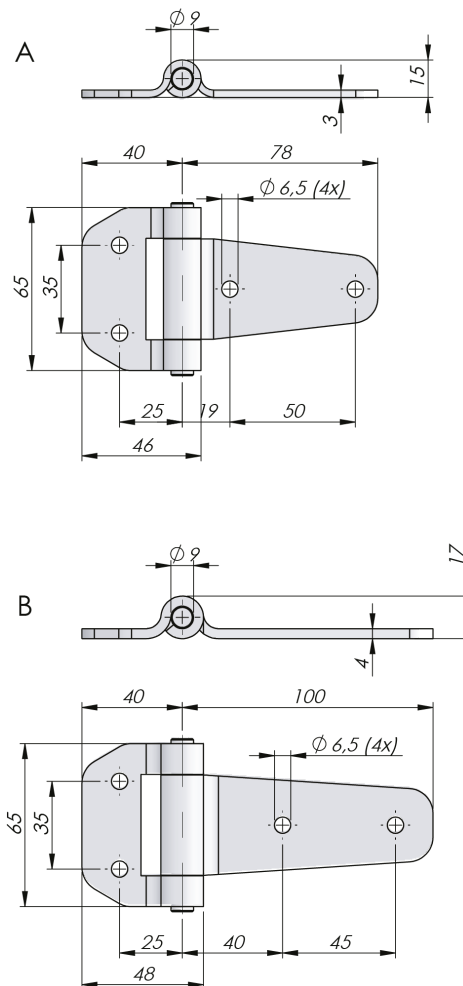
## RELATED PRODUCTS

**Other materials:** 6-465

Use the Index Code at [industrilas.com](http://industrilas.com)

## TECHNICAL INFORMATION

**Standards:** DIN EN 61373



**Industrilas**  
— When access counts —

P/N	Material	Drawing
322181-01	Steel, zinc plated	A
322181-02	Steel, zinc plated	B

